



**Davis-Thompson
Foundation**

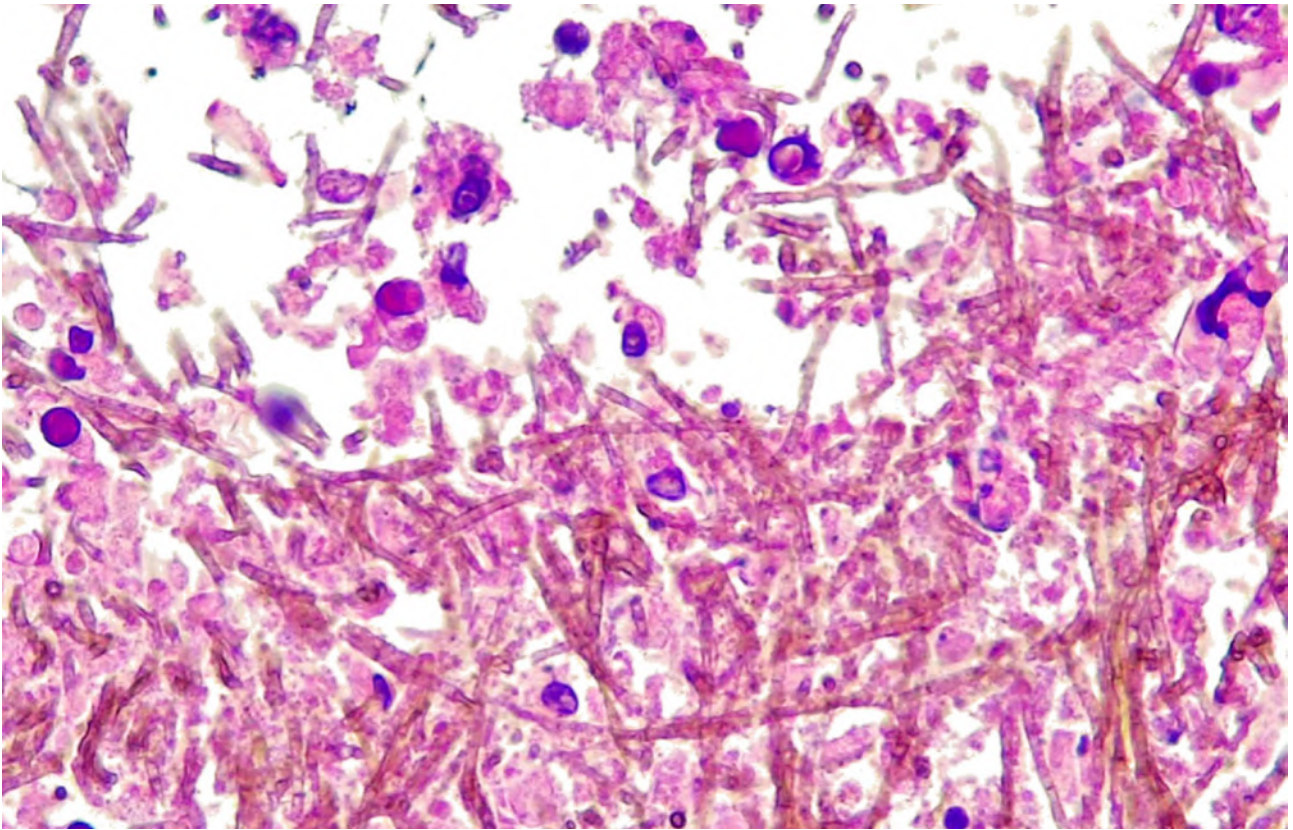
**C.L. DAVIS/S.W. THOMPSON
DVM FOUNDATION**

A tax-exempt, donative,
publicly-supported charity
For the advancement of veterinary
and comparative pathology

THE DAVIS-THOMPSON FOUNDATION NEWSLETTER

May

VOL. 56



TISSUE FROM A AXOLOTL

What are the linear structures that predominate in the image?

- A. Pigmented fungal hyphae
- B. Colonies of coccobacilli
- C. Fungal yeasts
- D. Nematode larvae

INSIDE THIS ISSUE

MONTHLY COVER IMAGE WINNER:

MMVZ Ruben Samir Bazan Aguirre and MVZ Frida Aranza López Quinto

Huitzil. Anatomopathological diagnosis. México.

Answer: A

Signalment: Axolotl (*Ambystoma mexicanum*), 4 years, female. Lethargy and coelomic distension

Morphologic Diagnosis: Pneumonia with pigmented fungal hyphae

Stain: H&E

-Dr. Katherine D. Watson - Cover Image Editor

-Dr. M. Donald McGavin - Cover Image Composition Analyst

Submit your image today (images@davisthompsonfoundation.org)!

| | | | |
|-----------|--------------------------------------|-----------|--------------------------------|
| 3 | Message from the CEO | 27 | Free Friday Seminar: Screwworm |
| 4 | JVDI in Focus | 28 | Just In Time Mock Exams |
| 6 | Seminar Reviews | 29 | ASVP & DTF Conference |
| 11 | Feedback changes | 30 | Racehorse Necropsy Workshop |
| 12 | Diagnostic Exercise | 31 | European Division Meeting |
| 14 | VIP Series | 32 | AAZV Workshop & Call for Cases |
| 15 | New Fish Pathology Series | 34 | West Coast Round Robin Case |
| 16 | Intro to Basic Histopathology | 37 | IDEXX CaseConnexx Corner |
| 17 | Histo Rounds in Spanish | 38 | BSTP Corner |
| 18 | Seminar Series in Spanish | 40 | Iberian Vet Path Meeting |
| 19 | Seminar Series in Portuguese | 41 | STP Annual Meeting |
| 20 | Full Day Seminar: Surgical Histopath | 43 | ECVP-ESVP-ESVC Meeting |
| 21 | CLASS & POLA | 44 | SFAPV Meeting |
| 22 | Eastern European Meeting | 45 | EAVLD Meeting |
| 23 | Free Friday Seminar: AI | 46 | LCPG Corner |
| 24 | Seminar Series in Mandarin | 62 | GHPN Scholarships |
| 25 | CLIC | 64 | Miscellaneous Announcements |
| 26 | China Seminar | | |

CEO & CHAIRMAN OF THE BOARD

FRANCISCO A. UZAL

PRESIDENT

JEY KOEHLER

VICEPRESIDENT OF OPERATIONS

RAFAELA DENEGRI

CFO

BRUCE H. WILLIAMS

BOARD OF DIRECTORS

ASIN, JAVIER

BRAYTON, CORY

BRICE, ANGELA

CARREIRA, VINICIUS

CARVALLO, FRANCISCO

CHAPMAN, JENNIFER

CORBIN, EMILY

CRAIG, LINDEN

DARK, MICHAEL

DEL PIERO, FABIO

DOLENSEK, TAMARA

FIDDES, KELSEY

GENDRON-FITZPATRICK, ANNETTE

JEONG, KYU-SHIK

LANGOHR, INGEBORG

LOMBARDINI, ERIC

LYLE, TIFFANY

MCINNES, ELIZABETH

MÍRA, MÁNDOKI

OJOK, LONZY

PESAVENTO, PATTY

PRIESTNALL, SIMON

ROSS, TONY

STROMBERG, PAUL

ZADOK, RUBEN

MESSAGE FROM THE CEO

Dear colleagues

Welcome to the May issue of the Davis-Thompson Foundation Newsletter, with the compliments of our great managing editors, Jeann Leal and Javier Asin. Thank you Jeann and Javier.

April has been very busy for the Foundation, with many activities already completed and the organization of myriad activities for the rest of the year.

The 2026 General Pathology Review course has already been completed, and organization of the remaining three of our "Big 4": CLIC, POLA and Foundations of Pathology is in full swing. And as usual, there are myriad training opportunities around the world in English, Spanish and Portuguese, with Mandarin language seminars coming up soon. Please peruse these pages to find out, and also look at our website for details and registration: <https://davisthompsonfoundation.org/>

Keeping up with the effort to streamline access to our activities and trying to facilitate the work of our volunteers, beginning with upcoming programs, post-event surveys will be available through your personal page on our website. Participants will be able to access and complete the survey directly from their account after the event concludes. Also, please note that completion of the survey is now required in order to receive your certificate of participation/completion. Please see more details about this on page 11 of this newsletter.

New and coming soon (mid-May): we are working on a section of our website for employment and training opportunities where everyone will be able to post and browse opportunities for free. We hope that everybody will take full advantage of it!!

I want to highlight the recently created LCPG Women Chapter: Building Community Within Comparative Pathology. More details on page 54. Please join me in thanking and congratulating our LCPG women chapter for this great initiative!

Last but not least, Fascicle number 6 (Tumors of the nervous system; Dan Rissi editor), is already in the printers and will be available for sale very soon.

Looking forward to seeing many of you in one or more of our upcoming seminars.

Kind regards.

Francisco (Paco) Uzal
Chief Executive Officer
Davis-Thompson Foundation



JVDI IN FOCUS

JVDI Journal of
Veterinary
Diagnostic
Investigation

The Official Journal of the
American Association of Veterinary Laboratory Diagnosticians



Our May focus is an article appearing in the upcoming May issue: **“Pancreatic and biliary duct *Hammondia heydorni* infection in a dog fed a raw elk-eat diet”** by Darian Giannino, Jeanine Peters-Kennedy, Manigandan Lejeune, Lisa Shearer, Mason Jager.

J Vet Diagn Invest 2026;38(3):473–478. <https://journals.sagepub.com/doi/abs/10.1177/10406387261419432>.

We describe a 3-y-old Standard Poodle that was fed a raw elk-meat diet and developed anorexia, icterus, and markedly elevated liver enzyme activities. Histopathology of the pancreatic and liver biopsy specimens revealed lymphohistiocytic pancreatitis and hepatitis with intraepithelial protozoa. Histologically, *Hammondia* spp. are indistinguishable from *Neospora caninum*. Therefore, we employed PCR and amplicon sequencing to further investigate our case. Amplification and sequencing of the ITS1 marker matched 100% with *Hammondia heydorni*. Intrapancreatic involvement and the histopathologic features of hepatic and pancreatic *H. heydorni* infection have not been reported previously in dogs, to our knowledge. *H. heydorni* is a coccidian organism with an obligatory 2-host life cycle. The definitive hosts are dogs and coyotes; the intermediate hosts are mostly ruminants, including cervids. Ingesting tissue cysts within the skeletal muscle of the intermediate hosts leads to infection in the definitive hosts. *H. heydorni* has been considered clinically inconsequential; however, increasing reports note gastrointestinal and hepatic disease in dogs associated with this organism, and *H. heydorni* is considered an emerging pathogen in dogs. Infection in our case was associated with ingestion of raw cervid meat; cases of *H. heydorni* infection are invariably linked to ingestion of raw-meat diets.

JVDI IN FOCUS

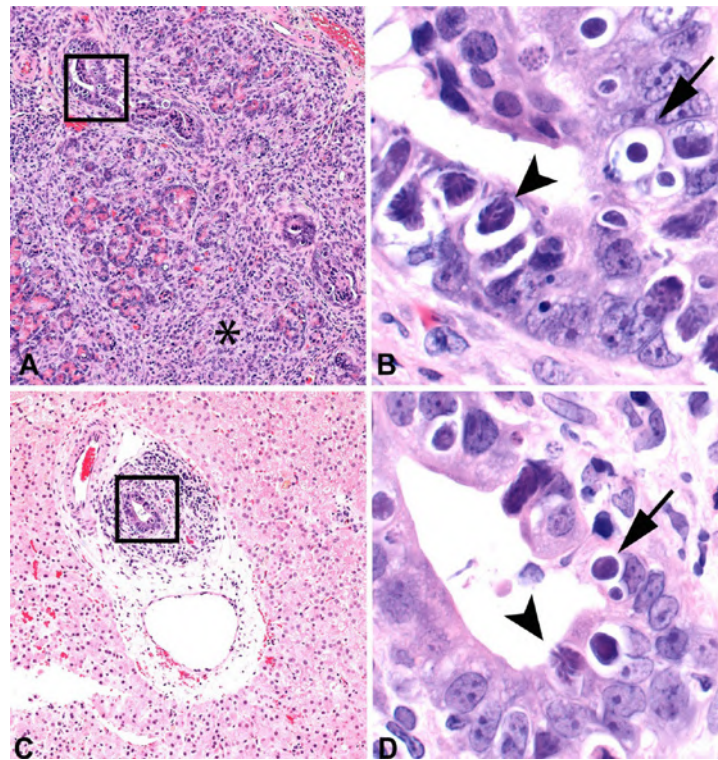


Figure 1. Intraepithelial *Hammondia heydorni* in the pancreas and liver of a 3-y-old, castrated male Standard Poodle. H&E. A. The pancreatic parenchyma has dense streams of fibrous tissue (asterisk), infiltrated by large numbers of neutrophils, macrophages, lymphocytes, and plasma cells. Pancreatic ducts are tortuous and dilated by cellular debris; ductular epithelium is expanded by vacuolated clear spaces (square). B. From the square in Fig. 1A: pancreatic duct epithelium is expanded by ~20- μ m vacuoles with protozoa in various stages of development, including schizonts (arrowhead) and myriad ~5 \times 1- μ m crescentic organisms (merozoites). Solitary, 20- μ m, clear ovoid structures with 5- μ m, round basophilic structures are developing oocysts (arrow). C. Biliary duct is encircled by concentric layers of fibrous tissue with moderate numbers of neutrophils and macrophages. Biliary duct is dilated, and the ductular epithelium is expanded by vacuolated clear spaces (square). D. From the square in Fig. 1C: biliary duct epithelium is expanded by ~20- μ m vacuoles with protozoa in various stages of development, including schizonts (arrowhead) containing myriad ~5 \times 1- μ m, crescentic organisms (merozoites). Solitary, 20- μ m, clear ovoid structures, with 5- μ m, round basophilic structures, are developing oocysts (arrow).

SEMINAR REVIEWS

NORTHEASTERN VETERINARY PATHOLOGY CONFERENCE

BY DR. ANNA-MARIA TRAVIS



Dr. Corrie Brown (LifeStock International) engages with the audience, wrapping up the day's main points.

LIONS, TIGERS, AND LESIONS, OH MY! THE 2026 NEVPC WAS A ROARING

What happens when you combine brilliant minds, baffling infectious diseases, and the stunning backdrop of the Smithsonian's National Zoo? You get the Northeast Veterinary Pathology Conference, which took Washington, D.C. by storm on April 17th and 18th for an unforgettable event!

A buzzing crowd of over 115 attendees descended on the zoo for two days of pathology and fun. The conference was expertly steered by the fantastic Dr. Anna-Maria Travis of the Joint Pathology Center. Our keynote speaker, the legendary Dr. Corrie Brown from LifeStock International, kept the energy high as moderator, with the brilliant Dr. Tony Alves from NIAID/NIH co-moderating. Together, they orchestrated a seamless and electric atmosphere.

SEMINAR REVIEWS

A WALK ON THE WILD SIDE OF INFECTIOUS DISEASE

This year's focus was a deep dive into the world of infectious diseases, and the 36 case presentations were nothing short of spectacular. We journeyed through a microscopic safari of protozoa, bacteria, viruses, and fungi across every species imaginable. And just when you thought you'd seen it all, one presentation even featured a sea anemone! It was a powerful reminder that pathology knows no bounds.

The conference was a true melting pot of minds. Esteemed pathologists mingled with veterinarians, residents, and students, including partners from the FDA, USDA, and the DoD. It was the perfect environment for budding pathologists to test their presentation skills in a room full of supportive colleagues and mentors.



Dr. Victoria Shuster (Tufts), presents a case of tracheal nematodiasis in an Eastern coyote.



Carmela Giacobello, NEVPC and Foundation volunteer, sits with her daughter and course director, Dr. Anna-Maria Travis (JPC), as they wrap up another great conference.

MORE THAN JUST A CONFERENCE!

Let's be honest, this event was just as much about fun as it was about formal learning! Fueled by a constant stream of coffee and a mountain of snacks, attendees traded microscopes for monkeys and slides for sea lions, exploring the beautiful zoo during breaks. The days were packed with great discussions, prize giveaways, and fun activities, all capped off by a lively Friday night social where colleagues became friends.

SEMINAR REVIEWS

The grand finale for several lucky participants was an experience straight out of a nature documentary: exclusive behind-the-scenes tours! These groups got up close and personal with keepers and their amazing animals, including lions, tigers, sea lions, and the residents of the reptile and bird houses. The undisputed highlight? A private meet-and-greet on the Asia trail with the two ridiculously adorable new sloth bear cubs and their family! Participants left feeling recharged, inspired, and grateful for such an incredible experience. The Northeast Veterinary Pathology Conference has cemented its reputation as a can't-miss regional gem.

DON'T MISS OUT IN 2027!

Feeling the FOMO (Fear Of Missing Out)? Don't worry! Clear your schedules and set your alarms, because next year's conference is already on the books.

When: April 16-17, 2027

Where: The Smithsonian's National Zoo, Washington, D.C.

Mark your calendars now, because you will NOT want to miss what is sure to be another wildly exciting event!



Dr. Graciela Orantes (JPC) looks on as Dr. Freemie Mitchell (JPC) encourages group discussion by asking the presenter a question.



Dr. Linnette Vasquez (Ross) and other attendees enjoy participating in a fun break activity.

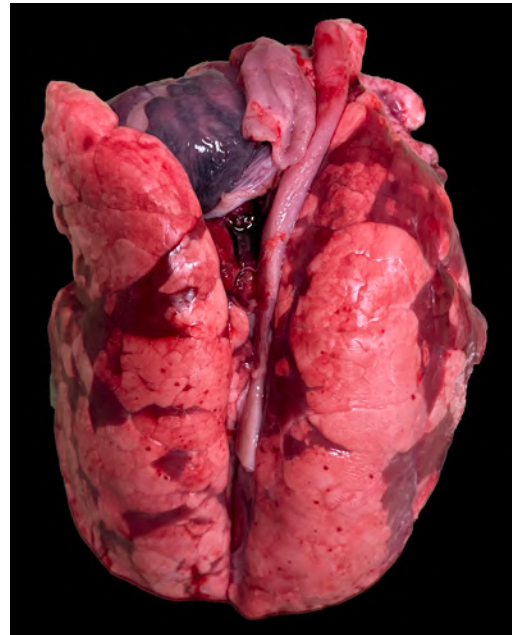
**Pictures by Ms. Katerina Slaughter
(2nd year vet student, NCSU)**

SEMINAR REVIEWS

RUMINANT NECROPSY WORKSHOP

BY DR. GRETA KRAFSUR

The Great Plains Veterinary Educational Center (GPVEC) in Clay Center, Nebraska, in partnership with the Davis-Thompson Foundation, conducted a ruminant necropsy workshop on April 20-21, 2026. Participants from the Virginia Department of Agriculture, Kansas State University, Iowa State University, and Texas A&M University joined instructors Francisco Uzal, Rafaela De Negri, and local host Greta Krafsur. The workshop featured morning didactic lectures covering prevalent gastrointestinal, respiratory, reproductive, and cardiopulmonary diseases affecting ruminants, particularly within the fed cattle industry. In the afternoons, attendees practiced necropsy skills on various ruminant cases, allowing for hands-on experience in identifying tissue and organ system changes associated with classic ruminant diseases such as lentiviral pneumonia, ovine bronchopneumonia, calf diphtheria, and scours.



Lung from a sheep with ovine progressive pneumonia



beautiful calf diphtheria lesion in the larynx of a calf.

The lectures promoted robust discussion, knowledge exchange, and collaboration among pathologists at different stages of their careers, all sharing an interest in production animal disease challenges and investigations. Given Nebraska's reputation as "the beef state," participants dined at Odyssey, a renowned local establishment in Hastings, Nebraska. Attendees were also introduced to ground-breaking research involving the first gene-edited cattle resistant to BVDV, a collaborative project led by GPVEC director and veterinarian Brian VanderLey, along with molecular biologists Aspen Workman and Mike Heaton from the United States Meat Animal Research Center (US MARC). Ginger and her offspring, Geraldo, are Gyr cattle edited at the CD46 gene, conferring resistance to BVDV infection.

SEMINAR REVIEWS

Additionally, participants learned about the center's military heritage, as it is situated on the former World War II naval ammunitions depot, commonly referred to as "Bunker University." The workshop concluded with a tour of one of the historic bunkers located at the facility.

Feedback was extremely positive. A couple of comments from attendees are below:

"This has been a wonderful experience, and a really learning opportunity for me. A lot of the questions I had during service before coming to the workshop have been answered. I've already tweaked a few comments in my necropsy reports and used them in the cases/phone calls I got this week." - Ji-Hang Yin

"The workshop was an invaluable experience that reinforced both my practical and diagnostic reasoning. The morning lectures and hands-on afternoons worked well, providing a strong theoretical and clinical context." - Rodrigo Paiva



Attendees and instructors of the ruminant necropsy workshop.

FEEDBACK CHANGES



Update:

Post-event surveys will now be available through your personal page on our website. After the event, simply log in to access and complete your survey.

Please note: survey completion is now required to receive your certificate of participation.

This change will help streamline evaluations and improve future programming. We value your feedback!



DIAGNOSTIC EXERCISE



Case #: 278; **Month:** March; **Year:** 2026

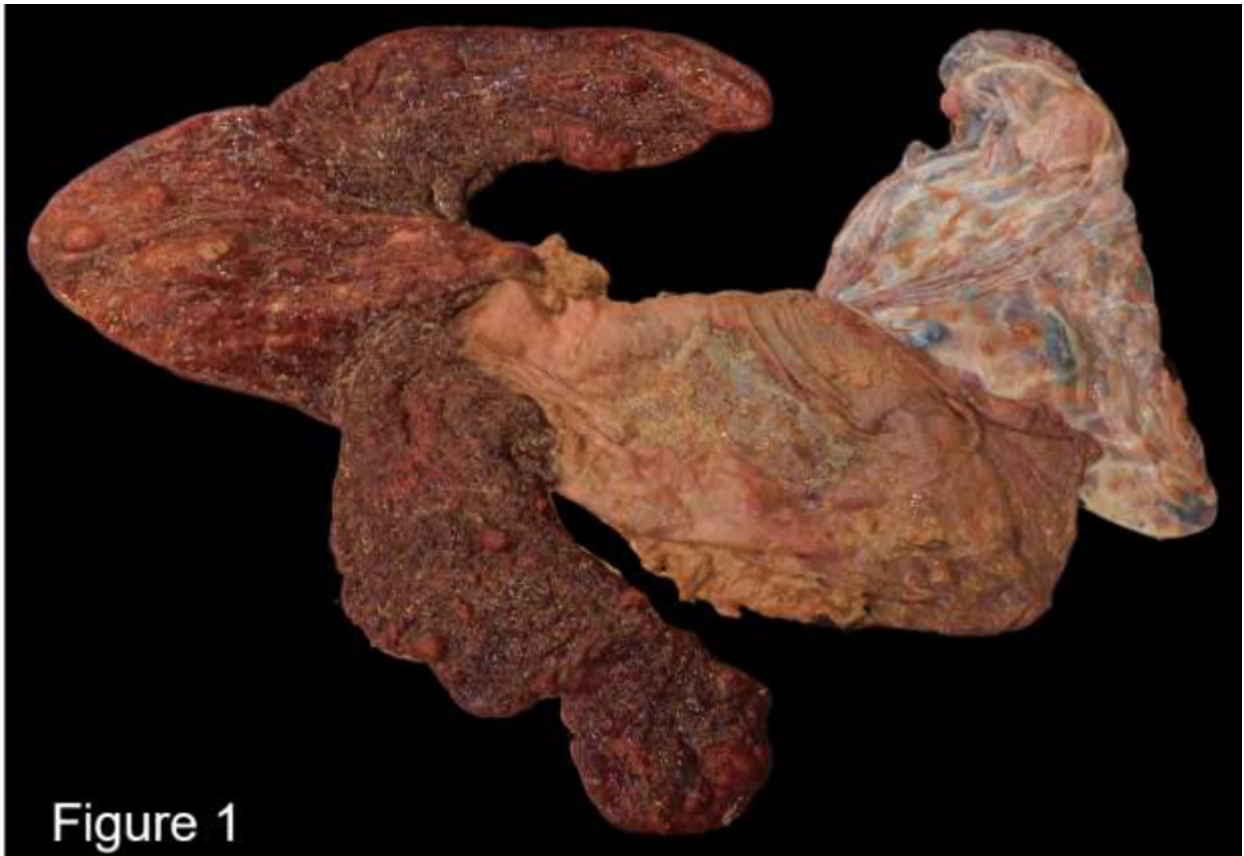
Contributors: Cassandra M. Powers.¹

¹California Animal Health and Food Safety Laboratory, Davis, CA and Purdue University, West Lafayette, IN.

***Corresponding author:** cmpowers@ucdavis.edu

History: A placenta from a mare following parturition was submitted for evaluation. The foal was reported to be unusually weak at birth but otherwise grossly normal with no clinical abnormalities. The mare was treated with antibiotics prior to parturition.

Necropsy findings: On the surface of the center of the body of the placenta is a poorly demarcated focal area composed of thick, tan, sticky, brown, mucoid exudate on the avillous region (Figure 1).





DIAGNOSTIC EXERCISE

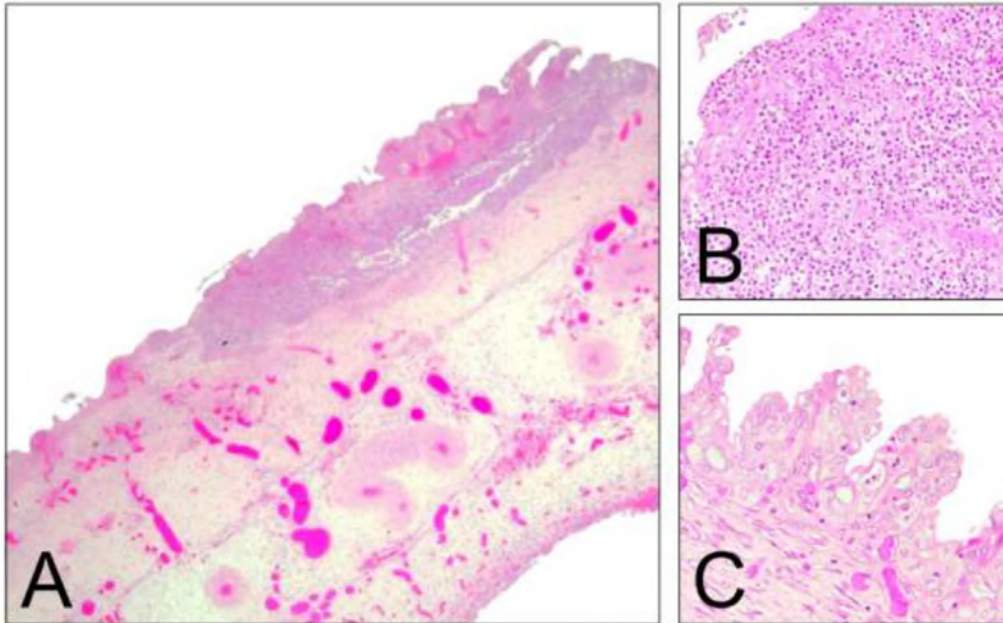


Figure 2

Follow-up questions:

- *Morphologic diagnosis*
- *Etiology*
- *Name the disease*

[Click here for answers](#)

Associate Editor for this Diagnostic Exercise: Franklin Riet-Correa
Editor-in-chief: Claudio Barros

*The Diagnostic Exercises are an initiative of the Latin Comparative Pathology Group (LCPG), the Latin American subdivision of The Davis-Thompson Foundation. These exercises are contributed by members and non-members from any country of residence. Consider submitting an exercise! A final document containing this material with answers and a brief discussion will be posted on the CL Davis website (<https://davisthompsonfoundation.org/diagnostic-exercise/>).

VIP SERIES

VIP

VETERINARY INTRODUCTORY PATHOLOGY

A SYSTEM-BASED REVIEW



Davis-Thompson
Foundation



KELSEY FIDDES
DVM, DACVP, DACVPM

- Virtual
- RACE
- \$100 all

First 2 are free!
Register today!

INTEGUMENT
 URINARY
 REPRODUCTIVE
 CARDIOVASCULAR
 ENDOCRINE
 PULMONARY
 MUSCULOSKELETAL
 DIGESTIVE
 HEMOLYMPHATIC
 NERVOUS
 SPECIAL SENSES. EYES
 SPECIAL SENSES. EARS

3rd Wednesday 3 PM CT Jan-Dec 2026

[Click here to register](#)

NEW FISH PATHOLOGY SERIES



Davis-Thompson
Foundation

A new
interactive
fin-omenal
Pathology Series!



FISH PATHOLOGY

WITH DR. EILEEN HENDERSON

Every first Wednesday
of even months- 2026
12- 1 PM CST



Virtual
Free registration
Register once, join all

[Click here to register](#)

INTRO TO BASIC HISTOPATHOLOGY



Davis-Thompson
Foundation



Virginia-Maryland
College of Veterinary Medicine

INTRODUCTION TO BASIC HISTOPATHOLOGY: A CASE BASED APPROACH



Francisco Carvalho
DVM, DSc, DACVP



Sheryl Coutermarsh-Ott
DVM, PhD, DACVP



Tomas Cecere
DVM, PhD, DACVP



Teresa Southard
DVM, PhD, DACVP



Santiago Diab
DVM, DACVP



Anna Hassebroek
DVM, PhD, DACVP

Every Wednesday
from MARCH 4 to MAY 27



Live sessions: \$150
Rebroadcast: \$50

[Click here to register](#)

HISTO ROUNDS IN SPANISH



RODADAS DE
HISTOPATOLOGIA DA LCPG



Davis-Thompson
Foundation

CASOS VARIADOS

Quinta-feira 21 de Maio, 2026
10:30 AM - 11:30 AM CT



Mayane Facin
DVM, PhD, DACVP

[Click here to register](#)

SEMINAR SERIES IN SPANISH



Davis-Thompson
Foundation



**Seminar Series
in Spanish 2026**
21 de mayo,
11:00am-12:30pm CT

Trastornos vasculares y vasogénicos del sistema nervioso central en caninos y felinos



Jessica Molin
DVM, MSc, PhD, DECVP

Registration information
available soon in our website

SEMINAR SERIES IN PORTUGUESE



Davis-Thompson
Foundation



Seminar Series in Portuguese 2026

Maio

28

Neuropatologia

12:00-13:00 BRT



Fabiano Sant'Ana
MV, MSc, PhD



[Click here to register](#)

FULL DAY SEMINAR: SURGICAL HISTOPATH



Liz Rose
DMV, PhD, DACVP



Stefan Keller
DMV, PhD, DECVP



April Choi
DMV, PhD, DACVP



Patty Pesavento
DMV, PhD, DACVP



Davis-Thompson
Foundation

Full Day Seminar

A PRACTICAL APPROACH TO SMALL ANIMAL SURGICAL HISTOPATHOLOGY:

LIVER, GI, LYMPHOID AND ENDOCRINE



Tuesday
May 5th, 2026



09AM - 4:30PM



Virtual



PENDING



75 dollars



[Click here to register](#)

CLASS & POLA

CURRENT LAB ANIMAL SCIENCE SEMINAR (CLASS) & PATHOLOGY OF LAB ANIMALS (POLA)

CLASS MAY 14-15 | POLA MAY 18-22



Davis-Thompson Foundation



Jamie Case



Julie Sharp



Laura Cregar



Chad Brown



Katie Scott



Shawn Thomas



Imani Nicolis



Cory Brayton



Chip Lang



Jeffrey Frankel



Teresa Southard



Sam Medlin



Jennifer Safko



Amanda Beck



Adrienne Barrett



Melissa Teague



Kelsey Fiddes



Nicole Lukovsky-Akhsanov

**\$ CLASS \$100
POLA \$350 (MEMBERS)
\$450 (NO MEMBERS)**



RACE- PENDING



VIRTUAL

[Click here to register](#)

EASTERN EUROPEAN MEETING

RABBIT PATHOLOGY AND URINARY SYSTEM PATHOLOGY OF DOGS AND CATS




Davis-Thompson Foundation



7th Annual Davis-Thompson Foundation Eastern European Veterinary Pathology Meeting

 **MAY 20-22, 2026**

 **Budapest, Hungary**



 **In-person**

 **€220 by April 22**
€250 by May 6



Kate Hughes
BSc (Hons) BVSc PhD FRCPath
DACVP AFHEA FRCVS



Rachel Cianciolo
VMD, PhD, DACVP



Anna Szilasi
DVM, PhD



[Click here to register](#)

FREE FRIDAY SEMINAR: AI



Davis-Thompson
Foundation

Free-Friday Seminar
May 29, 2026
11 AM - 12:30 PM CDT

AI EMPOWERING RESEARCH PATHOLOGISTS



Valentina Stevenson
DVM, PhD, DACVP

 Virtual

[Click here to register](#)

SEMINAR SERIES IN MANDARIN



Davis-Thompson Foundation

Seminar Series in Mandarin

SAVE the DATE

2026- 2027



Common cutaneous neoplasms in dogs and cats
Ji-Hang Yin, DVM, MS, PhD, DACVP



USA: June 5
7:00-8:30 PM CT



From Cells to Tissues: Diagnostic Insights Through Cytology-Histopathology Correlation
Zi-An (Alan) Yu, DVM, MSc, DACVP (clinical) and Ji-Hang Yin, DVM, MS, PhD, DACVP



USA: October 2
7:00-8:30 PM CT



Pathology of Common and Uncommon Bovine Respiratory Diseases
Chia-Ching (Rory) Chien, DVM, MSc, PhD, DACVP



USA: Jan 8
6:00-7:30 PM CT



Common diseases of exotics
Elliott Sinming Chiu, DVM, MS, PhD, DACVP



USA: April 9
7:00-8:30 PM CT

8:00-9:30 am
China Standard Time

More information soon

CLIC



CLIC CURRENT LITERATURE AND IMAGE INTERPRETATION COURSE



Davis-Thompson Foundation



June 8-12, 2026



Linden Craig
DVM, PhD, DACVP



Lauren Guarneri
DVM, DACVP



Michelle Dennis
DVM, PhD, DACVP



Sarah Linn-Peirano
DVM, PhD, DACVP



Kim Newkirk
DVM, PhD, DACVP



Denae LoBato
DVM, PhD, DACVP

- 650+ board-style multiple choice questions
- Thousands of images (gross & microscopic)
- 30+ hours engaging poll-mode lectures

\$575-675 💰
 In-person 👤
 Knoxville, TN 📍
 28h RACE 🏆



THE UNIVERSITY of TENNESSEE **UT**
 College of Veterinary Medicine

Knoxville Tennessee Skyline #8 by Michael Tomsett used by permission

[Click here to register](#)

CHINA SEMINAR



Davis-Thompson
Foundation



实验病理学公益网络学习会
Open Online Learning Platform for Experimental Pathology



中國農業大學動物醫學院
College of Veterinary Medicine, China Agricultural University

PATHOLOGY FOR BEGINNERS FROM THE THEORY TO PRACTICE



Francisco Uzal
DVM, FRVC, MSc, PhD, DACVP



Elliott Sinming Chiu
DVM, MS, PhD, DACVP



June 27-28, 2026



09:00 AM - 5:00 PM



In person



No. 190 Ping'an Avenue,
Longzihu Street, Jinshui District,
Zhengzhou, He Nan Province



1500 RMB

[Click here to register](#)

FREE FRIDAY SEMINAR: SCREWWORM



Davis-Thompson
Foundation

Free-Friday Seminar

July 10, 2026

11 AM - 12:30 PM CDT

The Return of the New World Screwworm: Diagnostic Challenges and Implications for the USA



Roger Ramirez-Barrios
DVM, MS, PhD, DACVM
(Parasitology)

 Virtual



[Click here to register](#)

JUST IN TIME MOCK EXAMS



Davis-Thompson
Foundation

July 13-14, 2026

JUST IN TIME MOCK EXAMS

Francisco Uzal
DVM, MSc, PhD, DACVP



Eileen Henderson
DVM, MS, CertAqV, DACVP



Kevin Woolard
DVM, PhD, DACVP



Denise Imai
DVM, PhD, DACVP



Ingeborg Langohr
DVM, PhD, DACVP



Anne Lewis
DVM, PhD, DACVP



Javier Asin
DVM, PhD, DECV




Dalen Agnew
DVM, PhD, DACVP



Susan Bender
VMD, PhD, MS, DACVP



Registration fee: \$ 250

 Virtual

[Click here to register](#)

ASVP & DTF CONFERENCE

**BOOK
NOW**



Davis-Thompson
Foundation

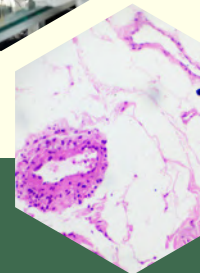
ASVP

Australian Society for
Veterinary Pathology



ASVP & DTF Scientific Conference

Special Event hosted at ANZCVS Vet Science Week



ANZCVS
VET SCIENCE
WEEK 2026





Friday 24 - Sunday 26 July 2026

www.asvp.asn.au

Gold Coast Convention and Exhibition Centre

Save the date for the 2026 ASVP & DTF Scientific Conference, which will be held 24–26 July 2026 at the Gold Coast Convention and Exhibition Centre.

This year, the 2026 conference will be delivered as a special joint event held in conjunction with ANZCVS Vet Science Week (VSW). This collaboration will bring together an even broader community of veterinary pathologists, clinicians, researchers and diagnostics professionals for a rich and diverse scientific program.

-  **ASVP & DTF Scientific Conference 2026**
-  **24–26 July 2026**
-  **Gold Coast Convention and Exhibition Centre**
-  **In partnership with ANZCVS Vet Science Week**



Program

The preliminary program has now been released, offering a first look at the scientific sessions and topics planned for this year's event. **[View the program here.](#)**

 **Book your Early Bird Registration before 25 May!**

Delegates have the option to register for:

- the ASVP & DTF Scientific Conference only, or
- the full VSW program, noting that the ASVP & DTF Scientific Conference sessions are also included with this full registration price.

For further information and full details on registration, visit the Vet Science Week website - <https://vetscienceweek.com.au/>



ASVP & DTF Annual Scientific Conference

Special Event hosted at ANZCVS Vet Science Week

Friday 24 - Sunday 26 July 2026



RACEHORSE NECROPSY WORKSHOP



Davis-Thompson
Foundation



HORSERACING
INTEGRITY
AND SAFETY
AUTHORITY



RACEHORSE NECROPSY WORKSHOP

August 27- 29, 2026



Dr. Francisco Uzal



Dr. Sue Stover



Dr. Stuart Brown



Dr. Laura Kennedy



Dr. Karen Hassan



Dr. Bruno Menarim



Dr. Julie Engiles



Dr. Michael Hardy



Dr. Carlos Schild



Dr. Matthew Coleridge



Dr. Will Farmer



Dr. Sian Durward-Akhurst



Free



In-person



Lexington, KY

[Click here to register](#)

EUROPEAN DIVISION MEETING



Davis-Thompson
Foundation

EUROPEAN
DIVISION

The Hard Stuff

Bone, joint and nervous system
pathology and diagnostic techniques



Linden Craig
DVM, PhD, DACVP



Andrew Miller
DVM, DACVP

September 13 - 14, 2026

 **In person**

 **Hotel Mercure
Nantes Centre gare**
Nantes, France

COST
430€ Early bird
495€ After 30 June

[Click here to register](#)

AAZV WORKSHOP & CALL FOR CASES

AAZV
AMERICAN ASSOCIATION OF ZOO
VETERINARIANS

AAZV 33rd ANNUAL

ZOO & WILDLIFE PATHOLOGY WORKSHOP

October 18, 2026

DAVIS-THOMPSON FOUNDATION

KEYNOTE PRESENTATION:

DISEASES OF AMPHIBIANS

ROBERT J. OSSIBOFF
DVM, PHD, DACVP

SUBMIT YOUR CASE BY JUNE 15

In-person **\$ 150-250**

8 hours of CE **Kansas City, Mo**

See next page & Click here

AAZV WORKSHOP & CALL FOR CASES

CALL FOR CASES!!

AAZV **33rd** Annual
Zoo & Wildlife Pathology Workshop 2026
Co-sponsored by the Davis-Thompson Foundation

This in person workshop will be held on [Sunday, October 18, 2026 from 8:00 AM to 5:00 PM Central time](#), in association with the annual meeting of the American Association of Zoo Veterinarians in Oklahoma City, Oklahoma, USA.

This eight-hour workshop brings together zoo veterinarians and pathologists for a full day of discussion of interesting cases in zoo and wildlife pathology. This year's keynote lecture will be by veterinary pathologist and aquatic/herpetology pathology specialist, **Dr. Robert J. Ossiboff**, professor at the University of Florida College of Veterinary Medicine. His keynote presentation will be on diseases of amphibians. Following the keynote lecture, veterinarians and veterinary students from around the world will present cases in an interactive session with an emphasis on amphibian pathology.

Got a hopping case in a frog, a slimy case in a salamander, or a serpentine case in a caecilian? Calling for interesting pathology cases (or case series) in amphibians! As usual we will consider any zoo or wildlife case submissions, even if they do not fit the theme. If you wish to present a case, please email Dr. Rachel Burns (reburns@sdzwa.org) with a brief description (1-2 sentences) of the case by [June 15, 2026](#). Those applicants with chosen cases will be notified by email by July 1.

INSTRUCTIONS FOR CASES SELECTED

1. **5 replicate H&E slides plus 2 unstained are required. If possible, please limit slides to one piece of tissue with the lesion to facilitate Aperio® scanning for digital production.**
2. **Send by FedEx or UPS (NOT USPS) with emailed tracking details (reburns@sdzwa.org) by [August 24, 2026](#) to:**

Dr. Rachel Burns
Disease Investigations, San Diego Zoo
1354 Old Globe Way
San Diego, CA, USA 92101

3. **Please prepare your 2 to 3 page write up in Microsoft Word (NOT pdf files) using the following headings on institutional letter head and send via email to Rachel Burns (reburns@sdzwa.org) by [August 24, 2026](#):**

**Page 1 CONTRIBUTOR(S)/ INSTITUTION: SIGNALMENT: HISTORY: GROSS FINDINGS:
Page 2 and 3. HISTOPATHOLOGIC AND CLINICAL PATHOLOGY FINDINGS:
MORPHOLOGIC/ETIOLOGIC DIAGNOSIS: DISCUSSION: REFERENCES:
ACKNOWLEDGMENTS**

The syllabus and scanned slides from the case write-ups should be available at least one week prior to the workshop and can be downloaded from the [Davis-Thompson Foundation website](https://davisthompsonfoundation.org/available-slide-conferences/) at:
<https://davisthompsonfoundation.org/available-slide-conferences/>

***If you need inspiration, also note that case material from 15 previous workshops are available for viewing at this site!**

Workshop registration includes access to scanned microscopic slides and case information. [All participants must register for this course](#). Remember that you are welcome to attend the Workshop even if you have not submitted a case.

WEST COAST ROUND ROBIN CASE

CONTRIBUTING LABORATORY: Oregon National Primate Research Center

Signalment and History:

18-year-old, female, rhesus macaque (*Macaca mulatta*) with a history of multiple presentations for conspecific trauma to the limbs, tail, and head, diarrhea, dehydration, and weight loss over an eight-year period. Chronic colitis and weight loss persisted despite numerous supportive and therapeutic treatments. Euthanasia was elected due to poor long-term prognosis.

Gross Findings:

Thin nutritional condition (BCS 1.5/5). The spleen and liver are mildly enlarged. The mucosa of the small intestine is segmentally and mildly edematous, reddened, and thickened with few hemorrhages. There are four stellate and annular mucosal cicatrices at the base of the cecum and within the ascending and transverse colon. Multifocally these cicatrices are reddened and ulcerated with overlying white tissue debris. The mucosa between the cicatrices is thickened. The renal capsules strip with difficulty. There are numerous adhesions between the renal capsule and renal cortex. The kidneys are pale and scarred, with irregular depressions present over the renal surface. On sectioned surface, the cortex is irregular with pale, wedge-shaped foci that correspond to the depressed areas noted on the surface. The medullae are irregular and pale. The renal pelvis is irregular. The ureters are unremarkable.

Histology:

Abundant pale, eosinophilic, amorphous material expands the medullary interstitium diffusely, replaces collecting ducts and extends minimally into the deep cortex. The urothelium lining the renal papilla is multifocally eroded and ulcerated. There is mild to moderate interstitial fibrosis of the medullary rays and loss and atrophy of the component tubules and collecting ducts. Changes in the cortex adjacent to the medullary rays include increased interstitial fibrous connective tissue, nephron loss, periglomerular fibrosis, hyperplasia, and hypertrophy of the parietal layer of Bowman's capsule, glomerular atrophy, glomerular obsolescence, tubule degeneration, regeneration, and occasional proteinaceous casts. An inflammatory infiltrate composed of low to moderate numbers of lymphocytes, fewer plasma cells and rare neutrophils is present in the fibrotic interstitium. The eosinophilic material in the renal medulla is orange-red and exhibits green birefringence under polarized light with a Congo Red stain.

WEST COAST ROUND ROBIN CASE

Diagnosis:

Kidneys: Deposition, amyloid, medullary interstitium, diffuse, severe, with mild to moderate fibrosis of medullary rays, adjacent, regional loss of the nephron, mild to moderate lymphocytic, plasmacytic and neutrophilic infiltrates and erosion and ulceration of the papillary urothelium.

Comments:

In this case, deposits of amyloid were present in the duodenal submucosa, jejunal mucosa, adrenal cortex, renal medulla, spleen, gallbladder, hepatic sinusoids and surrounded the vasculature of the liver and intrahepatic bile ducts. Systemic amyloidosis is a well-documented syndrome that affects a wide array of species. Concurrent disorders, especially chronic colitis, GI adenocarcinoma, arthritis, endometriosis, and trauma have been well-documented in the rhesus macaque with systemic amyloidosis. Clinical signs are widely variable and are dependent on the amyloid type, underlying cause, and organs affected. In most species, amyloid deposition in the kidney primarily occurs in the glomerulus and can result in mild to profound proteinuria and hypoalbuminemia. In some species, the medullary interstitium is targeted. Renal medullary amyloidosis has been reported in the rhesus macaque, the Abyssinian cat, Shar-Pei dog, rabbit, guinea pig, Dorcas gazelle, Siberian tiger, and cheetah, among others. Renal medullary amyloidosis is often a subclinical disease but can lead to impairment in renal function due to obstruction of the medullary tubules and collecting ducts.

Contributors:

Sheena Haney, DVM

With thanks to Anne Lewis, DVM, PhD, DACVP and Lois Colgin, DVM, DACPV

References:

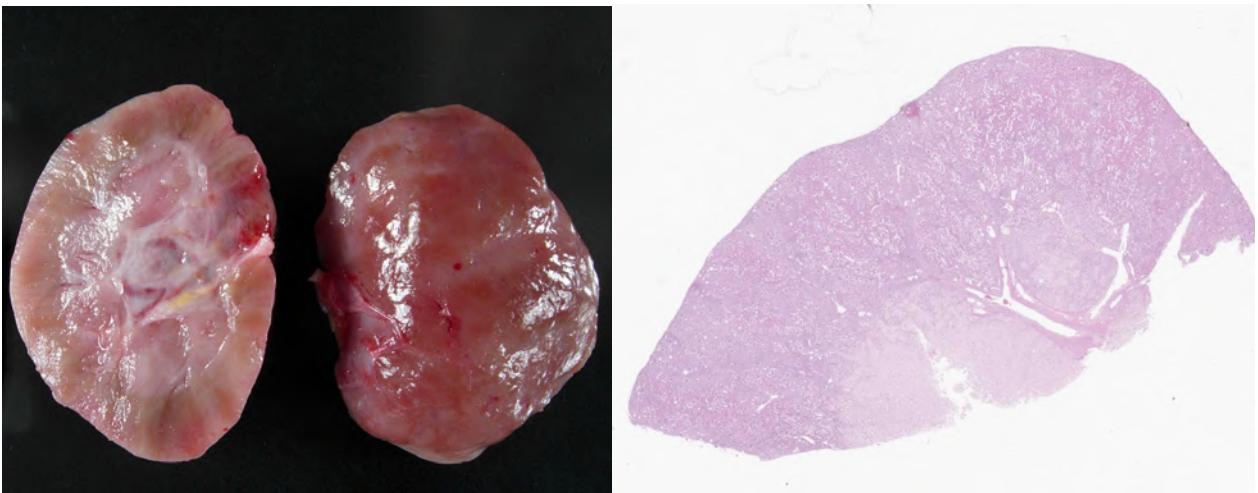
Gurung R, Li T. Renal Amyloidosis: Presentation, Diagnosis, and Management. *Am J Med.* 2022 Apr;135 Suppl 1:S38-S43.

Johnson AL, Keesler RI, Lewis AD, Reader JR, Laing ST. Common and Not-So-Common Pathologic Findings of the Gastrointestinal Tract of Rhesus and Cynomolgus Macaques. *Toxicol Pathol.* 2022 Jul;50(5):638-659.

Penticoff HB, Hipkiss HK, Hetak AA, Agnew DW, Fortin JS. Survey of amyloidosis cases among different free-living wild and zoo animals. *Amyloid.* 2021 Sep;28(3):145-152.

WEST COAST ROUND ROBIN CASE

Woldemeskel M. A concise review of amyloidosis in animals. *Vet Med Int.* 2012; 2012:427296.



KIDNEY. RENAL MEDULLARY AMYLOIDOSIS, RHESUS MACAQUE.

[Click here to see this slide in Noah's slidebox](#)



IDEXX CASECONNEXX CORNER

Source/ History: Recurrent pericardial effusion with previous episodes of cardiac tamponade. Thoracoscopy performed for pericardial resection.

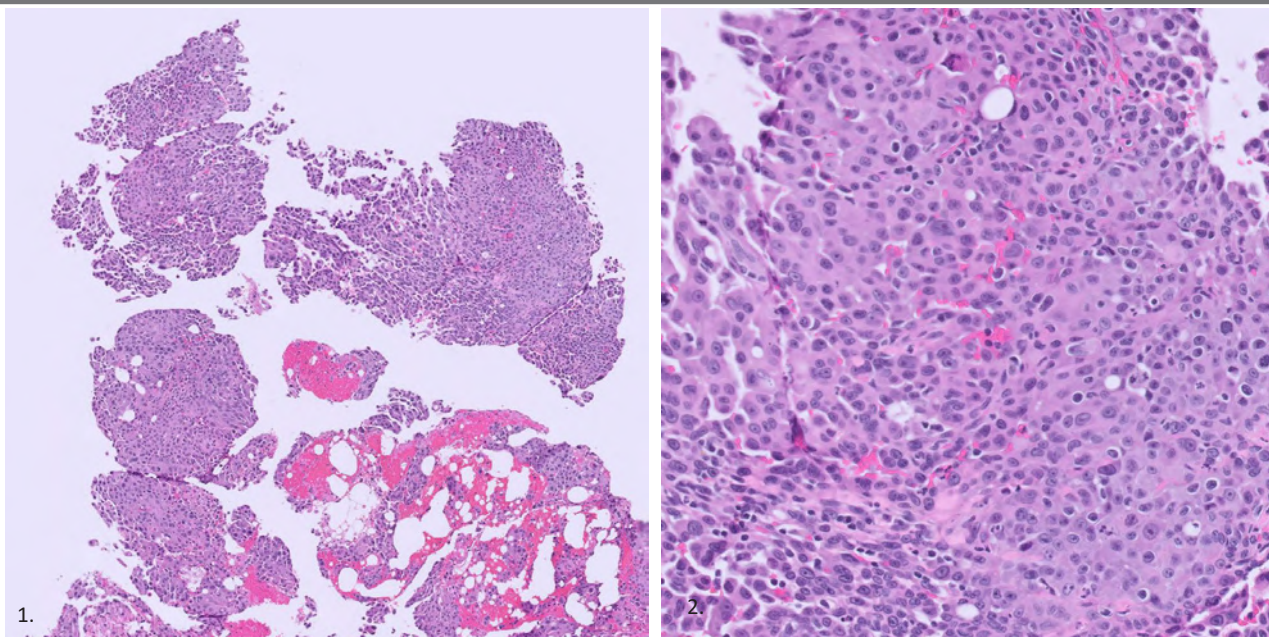


Figure 1. Surface of the pericardium is markedly expanded by nodular to broadly papillary projections of atypical mesothelial cells. **Figure 2.** Dense jumbled sheets and faint streams of polygonal to spindle cells exhibiting anisokaryosis, occasional multinucleation, and increased mitotic activity.

Histopathologic Description:

Pericardium: Markedly expanding from the surface of the pericardium, there are broad nodular to papillary projections of highly atypical epithelioid to spindle cells arranged in dense jumbled sheets and faint streams. The neoplastic cells have distinct cell borders, moderate amounts of eosinophilic cytoplasm, and a large round to oval to amoeboid nucleus which contains finely stippled chromatin and a single, prominent, magenta nucleolus. There is up to 2-3 fold anisocytosis and over 4 fold anisokaryosis, with scattered multinucleated cells. A total of 29 mitotic figures are counted in 2.37 mm².

Interpretation:

Mesothelioma

Comments:

Histopathology of these pericardial tissues revealed an exuberant proliferation of atypical mesothelial cells. Mesothelial cells are highly susceptible to exhibiting extensive hyperplasia in response to chronic cavity fusions, and differentiation between reactive and neoplastic mesothelial proliferations is a common diagnostic dilemma; however, in this case, the extent of cellular and nuclear atypia, with scattered multinucleated cells and markedly elevated mitotic activity is most suspicious for a neoplastic process.

Mesotheliomas are rare neoplasms arising from the mesothelium lining the peritoneal or thoracic cavity and the pericardium. The etiology is unknown in domestic animals and there is no proven association with inhalation of asbestos fibers (as there is in humans). These lesions are aggressive and can spread rapidly by transcavitary implantation, lymphatic invasion, and/or direct invasion. Chemotherapy has been reported to have a positive impact on survival time, with animals receiving chemotherapeutic protocols reporting a median survival time of 366 days compared to a median survival time of 74 days for animals receiving no adjuvant therapy.

Reference: Sayag, D., Lanore, D., Ponce, F., & Chamel, G. (2022). Outcome of dogs treated with chemotherapy for mesothelioma: A retrospective clinical study on 40 cases and a literature review. *Veterinary and comparative oncology*, 20(4), 825–835.

BSTP CORNER

Notice of Future Meetings

For up-to-date information on any events organized by the BSTP, please check the website – <https://www.bstp.org.uk/bstp-events/> or <https://www.bstp.org.uk/events/bstp-webinars-and-podcasts/>. Details of future meetings are correct at the time this booklet is generated, but the BSTP will not be held responsible for any changes to dates, topics and venues of these meetings.

CES 14: Musculoskeletal System and Skin

**Tuesday, Wednesday and Thursday
13.00 – 17.30 (UK time)**

Time: 13:00 – 17:30 (UK time)



CES 14 will be held over two weeks – on the afternoons of Tuesday 7th, Wednesday 8th, Thursday 9th, Tuesday 14th, Wednesday 15th and Thursday 16th July 2026, from 13.00 – 17.00 (UK time) each day.

The upcoming Continuing Education Symposium will provide an in-depth exploration of the Musculoskeletal System and Skin. Topics to be covered include (but are not limited to):

- Structure and function of normal mouse skin, hair, and nails
- Models of human skin diseases and systematic approaches to phenotyping cutaneous abnormalities
- Pattern recognition in dermatopathology
- Spontaneous and drug-induced neoplastic and non-neoplastic skin lesions in rodents and non-rodents
- In-vitro dermal methodologies and applied dermatologic case studies
- Sampling, processing, and INHAND nomenclature for bone, joints, skeletal muscle, and soft tissues
- Fundamentals of bone biology, histology, and animal models of osteoporosis and osteonecrosis
- Imaging applications in musculoskeletal safety assessment
- Developmental skeletal findings and species-specific musculoskeletal disease models
- Musculoskeletal medical devices and relevant clinical pathology biomarkers
- Neuromuscular junction pathology and animal models of muscular dystrophy

For more information, or to register (registration to open soon!), visit:

<https://www.bstp.org.uk/events/virtual-continuing-education-symposium-14-musculoskeletal-system-skin/>

This symposium is being organised by Hg3 Conferences Ltd, if you have any queries, please contact events@hg3.co.uk

BSTP CORNER

BSTP Webinars

Webinars are in preparation as joint events with other sister Societies. Keep checking the BSTP website for up-to-date information ([British Society of Toxicological Pathology](https://www.bstp.org.uk)) and also check the group LinkedIn page.

Future BSTP events are due to take place as follows:

BSTP 41st Annual Scientific Meeting 2026: Of mice and men: synergy between veterinary and human pathology.

The general theme is translational pathology, including the work done by veterinary pathologists using human tissues/systems to understand disease and identify hazards.

19th-20th November 2026, The Hilton, Cambridge, UK.

In collaboration with the Pathological Society

Non-BSTP Events

If you are interested in attending any events organized by other organizations, please visit:

<https://www.bstp.org.uk/non-bstp-events/>

If you would like details of any other events, including those on the BSTP website or publicized in the next 'Diary Dates' email, please send the information to the BSTP : membership@bstp.org.uk

BSTP Contact Details:

British Society of Toxicological Pathology (BSTP) | PO Box 43 | 95 Mortimer Street

London | W1W 7GB | UK

Tel: +44 020 3627 1534

Email: membership@bstp.org.uk

Website: <https://www.bstp.org.uk>

LinkedIn: British Society of Toxicological Pathology

IBERIAN VET PATH MEETING

Iberian Veterinary Pathology
Meeting 2026

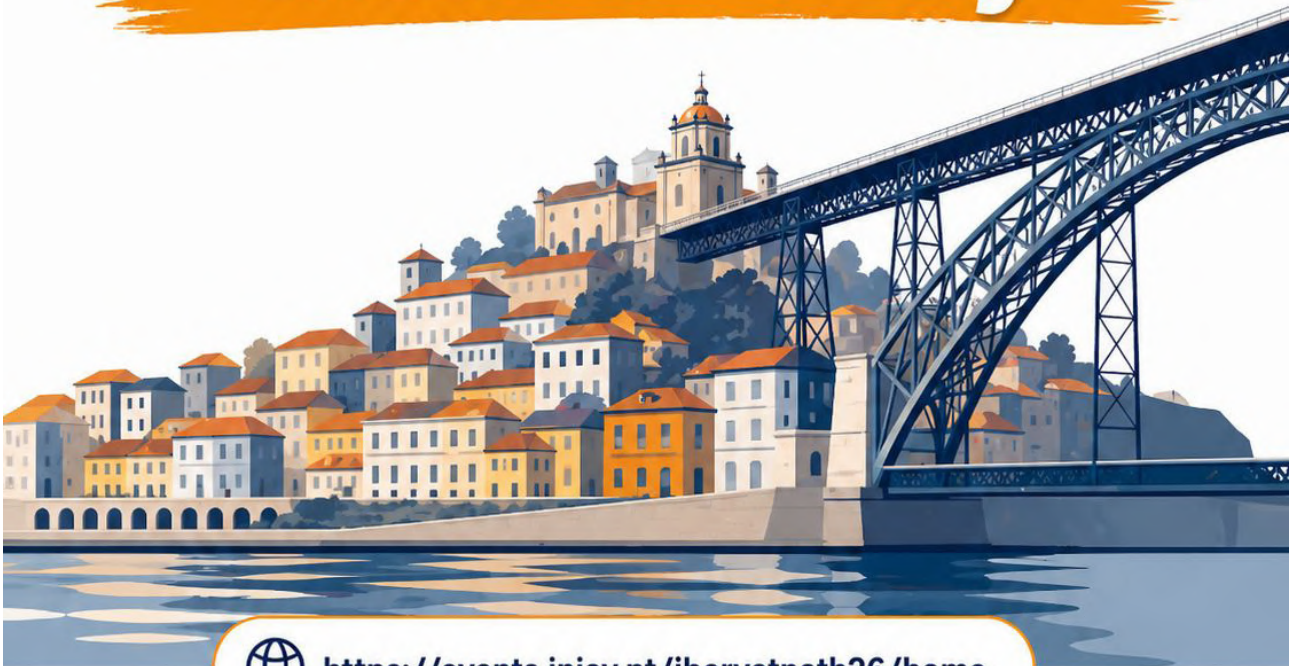
JUNE

PORTO | PORTUGAL



ABSTRACT SUBMISSION EXTENDED

until 8th May!



<https://events.inia.pt/ibervetpath26/home>

Click here to register

STP ANNUAL MEETING



STP 45TH ANNUAL SYMPOSIUM

The Pulse of Progress: Advancing Knowledge on Cardiovascular Toxicity
San Diego, California, June 21–24, 2026 | Paradise Point



Dear Colleague,

The **Society of Toxicologic Pathology (STP)** is committed to expanding its membership by engaging scientists and students (veterinary/residents/graduate) who are involved or interested in safety assessment, teaching, or research in toxicologic pathology or toxicology and inviting them to join the STP and attend our **45th Annual Symposium: The Pulse of Progress: Advancing Knowledge on Cardiovascular Toxicity**, scheduled for **June 21–24, 2026**, at **Paradise Point in San Diego, California**. The symposium offers a forward-looking, cross-disciplinary exploration of cutting-edge advances in cardiovascular toxicology, with abundant opportunities for learning, collaboration, and networking.

To help us reach scientists and students at your institution with diverse backgrounds and research interests, we kindly ask that you share the symposium information (included below) throughout your departmental newsletter, continuing education website, or other appropriate communication channels. Alternatively, please forward this information to the appropriate person or provide us with the contact information.

We are also pleased to highlight several **Student Travel Grants** through the generous Student Awards program that provides monetary support for meeting attendance and scientific presentation. Most award applications are due **March 30**, and eligibility requirements vary. Please see individual [award details](#) for detailed nomination and selection criteria. Additional student benefits include:

- **Free registration for active STP student members.**
- **Nonmember students** who apply for STP student membership by **April 1** (annual dues: \$45) and are approved will also receive **complimentary meeting registration**.
- **Nonmember meeting registrants** who apply for membership by **July 1** and are accepted will receive **free membership for the remainder of 2026**.

To apply for membership or learn more, please visit www.toxpath.org

Important Deadlines

- Abstract Submission Deadline: **March 30**
- Student Awards Application Deadline: **March 30**
- Early Bird Registration Deadline: **April 30**

Student Awards and Grants (Deadline: March 30) (<http://www.toxpath.org/am2026/awards.asp>)

- Student Travel Grants
- STP Young Investigator Awards
- STP Environmental Toxicologic Pathology SIG Student Research Award
- The Daniel Morton and Laura Dill Morton Scholarship (*Deadline: November 1, 2026*)
- IATP/STP Charles Capen Trainee Award (*Deadline: November 1, 2026*)

For the Web:

SOCIETY OF TOXICOLOGIC PATHOLOGY (STP) 45TH ANNUAL SYMPOSIUM

Join us for the **STP 45th Annual Symposium: The Pulse of Progress: Advancing Knowledge on Cardiovascular Toxicity**, taking place **June 21–24, 2026**, at **Paradise Point in San Diego, California**. This year's program offers a forward-looking, cross-disciplinary exploration of cutting-edge advances in cardiovascular toxicology, with abundant opportunities for learning, collaboration, and networking. Please visit the [Annual Symposium website](#) for additional information and to review the preliminary program.

Thank you very much.
Best regards,
STP Membership Committee

STP ANNUAL MEETING



STP 45TH ANNUAL SYMPOSIUM
The Pulse of Progress: Advancing Knowledge on Cardiovascular Toxicity
San Diego, California, June 21–24, 2026 | Paradise Point



Continuing Education Courses

STP will offer one continuing education course in person at the 2026 Annual Symposium and two virtually at other times. More information about the virtual courses is below and on the [Virtual Continuing Education](#) webpage.

Continuing Education Course

Sunday, June 21, 2026, 1:30 PM–5:00 PM EDT

- **Beyond the Dipstick: Urinalysis as a Tool for In Depth Assessment of the Renal Structure and Function**

Virtual Continuing Education Courses

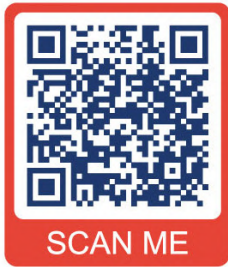
Friday, August 14, 2026, 12:00 Noon–3:45 PM EDT

- **Translational Challenges from Nonclinical to Clinical Program: Case Study Examples (Sponsored by the American College of Toxicology)**

Friday, September 11, 2026, 12:00 Noon–3:45 PM EDT

- **Environmental Impacts on Neurodevelopmental and Neurodegenerative Conditions**

ECVP-ESVP-ESVC MEETING



ESVP-ECVP-ESVCP-ECVCP
CONGRESS NANTES 2026

LA CITÉ DES CONGRÈS DE NANTES
16 SEPTEMBER RESIDENT'S DAY
17-19 SEPTEMBER JOINT CONGRESS



SFAPV MEETING

CONTINUING EDUCATION

CYTOLOGY FOR ANATOMIC PATHOLOGISTS AND HISTOLOGY FOR CLINICAL PATHOLOGISTS : BRIDGING THE GAP THROUGH DIAGNOSTIC CORRELATION

Annual training days in Pathology French Society of Veterinary Anatomic Pathology

This series of lectures and practical workshops explores the correlative interpretation of cytology and histology in canine and feline lesions, with a special focus on common neoplastic processes. This training aims to correlate and to help pathology trainees, anatomic pathologists and clinical pathologists, early-career pathologists and others build a strong diagnostic foundation by embracing complementary perspectives and open diagnostic dialogue, while also supporting practicing pathologists in navigating the nuances of diagnostic reporting when cytology as well as histology are involved. Examples of neoplastic lesions will be provided. The training will have several case discussions.

PROGRAM (Course exclusively in English)

08:30 - 09:00 Welcome

DAY 1 - MORNING (9:00 – 12:00)

- Lecture 1 The art and science of cytology reporting
- Lecture 2 Lymphoma and mast cell tumours in dogs: a cytology-histology comparison and current controversies
- Practical workshop 1 Case discussion

DAY 1 - AFTERNOON (14:00 – 18:00)

- Lecture 3 Soft tissue and melanocytic tumours a cytology-histology comparison and key diagnostic challenges
- Practical workshop 2 – case discussion
- Lecture 4 Using histologic principles to refine cytologic diagnosis of epithelial skin tumours
- Practical workshop 3 – case discussion

SPEAKERS

Dr. Francesco Cian, DipECVCP (BattLab/LABOKLIN, Coventry, UK)
Dr. Roberta Rasotto, DipECVP (Histopathology Consultant, Vicenza, Italy)
Dr. Nicolas Soetart, DipECVCP (LabOniris, Oniris, Nantes)
Dr. Edouard Reyes-Gomez, DipECVCP (ENVA, Maisons-Alfort, France)

PEDAGOGICAL METHODS

Alternation of various teaching methods, adapted to the different skills to be acquired. Lectures will provide attendants/trainees with the necessary theoretical knowledge, while practical workshops will familiarize them with analytical and diagnostic techniques. Case discussions will also be offered, in order to encourage attendants/trainees to develop their analytical and synthesis skills.

EVALUATION METHODS

A formative evaluation will be carried out throughout the program to allow speakers/trainers to provide regular feedback to participants and help them progress in their learning. It will take the form of practical exercises, group discussions and MCQs.

Organizing Committee :
Jérôme Abadie (Oniris) / Laetitia Jaillardon (Oniris)
Nathalie Cordonnier (ENVA)
Anne-Laure Bauchet (SFAPV) / Ève Laloy (SFAPV)
Stéphanie Muller (SFAPV)

Contact registration:
Oniris vet school
Continuing Education Department

Registration :

<https://formation-continue.envf.fr/formation/324/cytology-for-anatomic-pathologists-and-histology-for-clinical-pathologists-correlations-and-follow-up-between-cytology-and-histology>



PEDAGOGICAL OBJECTIVES

At the end of the training, veterinary anatomical and clinical pathologists will be able:

- To know practical tips for writing cytology reports and diagnostic comments.
- To improve knowledge and diagnostic confidence in cytology and histopathology, with particular attention to selected tumours.
- To understand the correlations between cytological and histological findings in tumour diagnosis, including recent updates.



WHO ?

- Veterinarians specialized in anatomic pathology and in clinical pathology
- Veterinary Residents in Anatomic Pathology and in Clinical Pathology Training

EVENT DATES



15 September 2026



LOCATION

Oniris - Nantes (France)
Veterinary campus

REGISTRATION FEE

Regular rate
300 € Net of tax
Residents*
50€ Net of tax
*Resident attending the RESIDENT DAY **
25€ Net of tax
*valid proof at the time of registration

VALIDATION: Certificate of continuing education completion

EAVLD MEETING



EAVLD
2026
8th

CONGRESS OF THE
**European Association
of Veterinary Laboratory
Diagnostics**

19-21 October 2026
Royal Olympic Hotel,
Athens, Greece

**SAVE THE
DATE**

www.eavld2026.org



LCPG CORNER



Seminar Series in Spanish 2026



| | | |
|---|------------------------------------|---|
|  | Febrero COMPLETED | Principales enfermedades de cetáceos Mariano Domingo DVM, PhD, DECVP |
|  | Marzo COMPLETED | Enfermedades infecciosas de lagomorfos Javier Asin DVM, PhD, DECVP |
|  | May 21 | Trastornos vasculares y vasogénicos del sistema nervioso central en caninos y felinos Jessica Molin DVM, MSc, PhD, DECVP |
|  | Julio 2 | Lesiones más frecuentes en caninos y felinos Leonardo Minatel DVM, PhD |
|  | Agosto 13 | Patología de la fauna silvestre Australiana: ciencia para conservar Viviana Gonzalez Astudillo BVSc, MNR, PhD, MANZCVS, DACVP |
|  | Septiembre 24 | Desafíos diagnósticos en enfermedades neurológicas y asociadas a circovirus porcinos Dr. Pablo Pineyro, DVM, MVSc, DVSc, PhD |
|  | Noviembre 26 | Principales enfermedades de perezosos Dr. Daniel Felipe Barrantes Murillo DVM, MS, PhD, DACVP |
|  | Diciembre 3 | Diagnóstico de diarreas en pequeños rumiantes Paco Uzal DVM, MSc, PhD, Dipl. ACVP |

Registration for individual sessions is available on the website

LCPG CORNER



RONDAS DE HISTOPATOLOGÍA DEL LCPG 2025-2026 10:30 - 11:30 CT



Davis-Thompson
Foundation

Sep
COMPLETED



Casos variados de sistema gastrointestinal
Francisco Uzal, DVM, MSc, PhD, DACVP
en español

Oct
COMPLETED



Casos variados
Melissa Macias, DVM, MPVM, PhD, DACVP
en español

Nov
COMPLETED



Casos variados
Rafaela de Negri, DVM, MSc
em Português

Dic
COMPLETED



Casos variados
Paola Barato, DVM, PhD
en español

Ene
COMPLETED



Casos variados
Mariano Carossino, DVM, PhD, DACVP, DACVM
en español

Feb
COMPLETED



Casos de Rotina
Felipe Pierezan, DVM, MSc, PhD, DACVP
em Português

Mar
COMPLETED



Casos Misceláneos
Javier Asin, DVM, PhD, DECPV
en español

Abr
COMPLETED



Casos variados
Mayane Facin, DVM, PhD, DACVP
em Português

Mayo
21



Casos variados
Federico Cifuentes, MV, PhD, DACVP
en español

Junio
18



Casos variados
Ileana Miranda, DVM, MSc, DACVP
em Português

Julio
16

Registration for individual sessions is
available on the website

LCPG CORNER



Davis-Thompson
Foundation



Seminar Series in Portuguese 2026

**SAVE THE
DATE**

12:00-13:00 BRT



Microambiente tumoral
Mayra Flecher
MV, MSc, PhD



Patologia molecular
Thaynara P. Carvalho
MV, MSc, PhD



Neuropatologia
Fabiano Sant'Ana
MV, MSc, PhD



Animais silvestres
Jeann Leal
MV, MSc, PhD

Registration for individual sessions is
available on the website

LCPG CORNER



Davis-Thompson
Foundation



5 y 6 de Junio de 2026



9:00-17:00 GMT-6



en persona



40-50 USD

Diagnóstico de las neoplasias mamarias en la perra y la gata



Laura Peña Fernández

DVM, PhD, Dipl. ECVP



Escuela de Medicina y Cirugía San Francisco de Asis,
Vasquez de Coronado, San Jose, Costa Rica.

[Click here to register](#)

LCPG CORNER



Davis-Thompson
Foundation



Cornell University

TALLER DE NECROPSIA

Diseñado para clínicos de pequeños animales y
veterinarios de fauna silvestre



Rafaela De Negri
DVM, MSc



Carmen Smith
DVM, DACVP



Emilia Peñaherrera-Romero
BSc, MSc



Francisco Cabrera
MV, MSc, PhD



20 y 21 de Julio de 2026



08:00- 17:00



en persona



Pendiente



UNIVERSIDAD SAN
FRANCISCO DE QUITO

SAVE THE DATE



Seminarios
en inglés y
español

- ✓ Actividades prácticas
- ✓ Reconocimiento de lesiones macroscópicas
- ✓ Principios bioéticos y legales

[Click here for more information](#)

LCPG CORNER



XVII BRAZILIAN SYMPOSIUM

OF THE DAVIS-THOMPSON FOUNDATION

SUBJECT: ZOO AND WILDLIFE PATHOLOGY

Date September 28th to October 1st

Local Recife, Pernambuco, Brazil

<https://doity.com.br/xiii-endivet>



Davis-Thompson
Foundation



Dr. Karen Terio
DMV, PhD, DACVP

University of Illinois
Urbana-Champaign

Click here for
more information

LCPG CORNER



Davis-Thompson
Foundation



Dermatopatología

Joaquín Ortega Porcel
DVM, PhD, DACVP



Uruguay- Ago 31 - Sept 1



Argentina - Sept 3 - 4



Paraguay - Sept 7 - 8



En persona

LCPG CORNER



Become a member of the Latin Comparative Pathology Group



LCPG:

- Provides Diagnostic Exercises
- Offers travel awards
- Coordinates externships in US labs for Latin Americans
- Organizes and lectures in Latin American seminars and courses

Click here for more information about how to become a member

LCPG CORNER

Introducing the LCPG Women Chapter: Building Community Within Comparative Pathology

The Latin Comparative Pathology Group (LCPG) is delighted to spotlight the Women Chapter, a member-driven initiative created to foster connection, support, and professional growth within our diverse comparative pathology community. While the chapter focuses on uplifting women and individuals who identify as women, its mission and activities strengthen the entire LCPG network, enriching the collaborative spirit that defines our field.

Our Mission

The Women Chapter is committed to promoting a sense of belonging, facilitating information exchange, and creating opportunities for mentorship and professional development among pathologists across Latin America and beyond. Through conversation, education, and shared experiences, the chapter aims to elevate voices and build pathways for success at all career stages.

Who We Are

The Women Chapter welcomes all LCPG members who are interested in engaging with and supporting this initiative. Led by a Chair, Co-Chair, and dedicated members-at-large, the chapter functions through open collaboration, virtual meetings, and working groups organized around topics important to our community.

What We Do

The Women Chapter hosts virtual discussions on issues affecting pathologists, proposes educational activities such as webinars and workshops, and contributes to scientific sessions within LCPG meetings. Each year, the group prepares an annual report summarizing its achievements, events, and goals for the future.

Why It Matters

Pathology thrives when diverse voices come together. The Women Chapter helps advance that vision, encouraging leadership, sharing perspectives, and strengthening the collaborative fabric of our profession. Whether you're early in training or well-established in your career, this chapter offers a welcoming space to connect, learn, and grow.

If you're interested in getting involved or learning more, we invite you to reach out to Dr. María José Navarrete Talloni (mariajose.navarrete@liu.edu) and/or Dr. Melissa Macias-Rioseco (mmaciasrioseco@ucdavis.edu). Together, we look forward to continuing to build a supportive and vibrant community within the LCPG. We would love to highlight the voices and stories of our members from our community, this to celebrate the diverse paths and contributions of women in comparative pathology from Latin America.

LCPG CORNER



Latin Comparative
Pathology Group
Women's Chapter



Dr. Ingeborg Langohr, DVM, PhD, DACVP, is an investigative pathologist and head of the pathology team in the Global Discovery Pathology and Multimodal Imaging Department at Sanofi. She earned her veterinary degree at the Universidade Federal de Santa Maria, Brazil, where she gained early pathology experience under Claudio Barros and colleagues. She completed a residency in veterinary anatomic pathology and a PhD in interdisciplinary comparative medicine at Purdue University, followed by faculty positions at Michigan State University and Louisiana State University. She later joined Sanofi to focus on drug discovery. Her research interests include models of human diseases, including ocular conditions. She has over 25 years of experience and more than 150 peer-reviewed publications. She also

enjoys exploring the outdoors. Dr. Langohr is a tireless comparative pathologist with the highest work ethic and an exceptional dedication to sharing broad knowledge with trainees and colleagues, highly effective in both academia and industry.



Dr. Ana Alcaraz, DVM, PhD, DACVP, is a veterinary anatomic pathologist. She earned her DVM from the Universidad Nacional Autónoma de México and completed her PhD and pathology training at Cornell University, where she later served as a lecturer in veterinary pathology and currently is an adjunct professor. She is board-certified by the American College of Veterinary Pathologists since 1999 and earned a Diplomate in Veterinary Education from the Royal Veterinary College in London. Dr. Alcaraz has dedicated her career to diagnostic pathology, veterinary education, and mentoring future veterinarians. Likely among the first Mexican women to achieve ACVP diplomate status and

as a respected educator and Latin American woman in the field, she has helped train and inspire generations of veterinary students and pathologists.

LCPG CORNER



Dr. Rocío González Barrientos, DVM, DACVP, is a veterinary anatomic pathologist and Clinical Assistant Professor at the University of Florida College of Veterinary Medicine. Her work focuses on diagnostic pathology and wildlife diseases, with particular interest in marine mammals and emerging infections such as *Brucella ceti* in dolphins. She currently serves as Chair of the American College of Veterinary Pathologists (ACVP) Student Externship Scholarships Committee, supporting veterinary students pursuing careers in pathology. Originally from the Nicoya Peninsula in Costa Rica, Rocío is passionate about strengthening collaborations across the Americas and advancing wildlife health and conservation through research, education, and mentorship.



Prof. Dr. Leila Gertrudis Maidana Moreno, DVM, MSc. PhD, graduated from the National University of Asunción. She completed her Master's and PhD at the State University of Londrina (Brazil). She currently serves as Assistant Professor in the courses of Pathologic Anatomy and Histology at the National University of Asunción and is the Head of the Department of Pathological Sciences at the Faculty of Veterinary Sciences (FCV-UNA). She is a member of the Latin Comparative Pathology Group, the Brazilian Association of Veterinary Pathology, and the Davis Thompson Foundation. She is also an active participant in

national master's programs in the field of Pathologic Anatomy. In her free time, she enjoys nature!



Dr. Gabriela Cintia Postma, Msc. PhD, Esp. in teaching, is a veterinarian and pathologist at the Faculty of Veterinary Sciences of the University of Buenos Aires (UBA), where she is involved in teaching, diagnostic work, and research in veterinary pathology. She has worked for many years in the field of comparative pathology, including histopathology, cytology, and necropsy examinations, and actively participates in the training of veterinary medicine students. Her academic work also includes research on animal diseases and experimental models, with publications on topics such as mineral deficiencies in cattle

and comparative pathology in small animals. Through her teaching and scientific work, Dr. Postma contributes to the advancement of veterinary pathology in Argentina and to strengthening the connection between diagnostics, research, and education in the region.

LCPG CORNER



Dr. Ana María Canal, DVM, MSc., PhD, graduated as a Veterinarian in 1980 from the Faculty of Veterinary Sciences at the National University of the Littoral (FCV-UNL). She then began working at the Ministry of Production of the Province of Santa Fe in the pathology laboratory, eventually becoming Director of Animal Health for the province. Her professional training developed over the years through mentorship with a human pathologist, specialized courses, a master's degree at the Austral University of Chile, participation in RAPAVE meetings and seminars beginning in 1998, and later a PhD from the Complutense University of Madrid. In parallel, she maintained teaching activities and continuous diagnostic work in the laboratory of the Faculty of Veterinary Sciences in Esperanza, where

she joined the faculty in 1984 and from which she retired this year. Pathology has been a deeply rewarding discipline for her, providing opportunities for continuous learning, collaboration with colleagues, and the fulfillment of teaching and mentoring veterinary students.



Dr. Aline Viott, DVM, MSc. PhD, is a veterinary pathologist and associate professor at the Federal University of Paraná, Brazil. She earned her veterinary degree from the State University of Santa Catarina and completed her MSc and PhD in Veterinary Pathology at the Federal University of Santa Maria and the Federal University of Minas Gerais. Her work focuses on infectious diseases of production animals, especially swine. Aline is actively involved in teaching, research, and the training of veterinary pathologists through graduate programs and residency programs. She is passionate about strengthening veterinary pathology education and collaborative research to improve Pathology. Beyond academia, she is the proud mother of a bright and beautiful girl, Cecilia, and the wife of

Everton, roles that continually inspire her perspective on science and life. She also finds joy in reading, baking cakes, and the company of her beloved cat Mia.

LCPG CORNER



Dr. Melissa Macías-Rioseco, DVM, MPVM, PhD, DACVP, is a veterinary anatomic pathologist and Associate Professor at the University of California, Davis, working at the California Animal Health and Food Safety Laboratory System in Tulare. Her interests include reproductive pathology, abortion in livestock, and infectious diseases, while also contributing to diagnostic pathology of poultry and other species. She earned her veterinary degree from the Universidad Autónoma de Baja California, Mexico. Completed a Master of Preventive Veterinary Medicine at UC Davis, an anatomic pathology residency at Washington State University, and a PhD from the Universidad de la República and INIA in Uruguay. She became board-

certified by the American College of Veterinary Pathologists (ACVP) in 2022. Dr. Macías-Rioseco integrates diagnostic service, research, teaching, and international collaboration. She is actively involved in organizations including ACVP, AAVLD, DTF, LCPG and others, contributing to mentorship, education, and professional collaboration across the Americas.



Dr. María José Navarrete Talloni, DVM, MPVM, PhD, is an Associate Professor of Anatomical Pathology and Assistant Dean at Long Island University, New York. A graduate of the Universidad de Chile, with advanced training at UC Davis (MPVM) and the University of Veterinary Medicine Hannover (pathology training and PhD), she applies a One Health framework to investigate emerging infectious diseases at the domestic-wildlife interface, as well as forensic pathology. She is a Marie Curie Fellow, Social Change Fellow, and alumna of the Vital Voices Visionaries Program. Having lived in multiple countries and cultures, Dr. Navarrete brings a global perspective that has deeply shaped her professional path. She is a committed advocate for women in pathology and

multicultural outreach, contributing through LCPG, ACVP, AAVMC, Pawsibilities Vet Med, and bilingual STEMM initiatives. Her scientific work, combined with her leadership in gender equality and inclusive education, underscores her dedication to elevating underrepresented voices and strengthening the future veterinary and biomedical workforce.

LCPG CORNER

NECROPSY WORKSHOP FOR VETERINARIANS, MEXICALI AND TIJUANA, BAJA CALIFORNIA

BY DR. MELISSA MACIAS

The event took place on April 17 and 18 in the cities of Mexicali and Tijuana, respectively, under the guidance of Drs. Francisco Uzal, Javier Asín, Melissa Macías Rioseco, and Alfonso de la Mora Valle.

On the 17th, the workshop was hosted by the “Grupo Ganadero Mexicali” at the La Polvorera facility, with Drs. Manuel Ceseña, Paloma Ortiz, and Carlos Serrano as hosts. A group of 27 participants, including veterinarians, agronomists, and veterinary nutritionists, attended the event. The workshop was conducted in the necropsy area, where five feed-lot cattle carcasses were presented, providing the opportunity to work in groups of 4 to 5 participants per animal. Each animal presented different findings, and possible causes, technical approaches, and options to address the likely clinical problem were discussed.

The following day, the team traveled to the city of Tijuana for a second workshop, this time focused on dairy cattle. Dr. Felipe Guzmán hosted this session. Five animals were examined, with 17 participants in attendance. Similarly, the format consisted of discussing the findings, possible causes, and strategies to approach and resolve the diagnostic problem.



Instructors and attendees to the Necropsy workshop in Mexicali

LCPG CORNER



Participants and instructors of the necropsy workshop in Tijuana



Necropsy area in Mexicali

GHPN SCHOLARSHIPS



DTF-GHPN Education Scholarship For Select DTF On-Line and/or Course Material



Background. The Global Health Pathology Network (GHPN), under the umbrella of the Davis-Thompson Foundation (DTF) for Veterinary Pathology, conducts workshops in resource-constrained settings focused on enhancing veterinary diagnostic abilities using interactive educational modalities and adult learning principles. In part, the success of the GHPN training workshops is built on the successes of in-country veterinary pathologists and professionals in various locations worldwide. Consequently, to expand the sphere of the network through the development of capable, motivated professional cadre, the GHPN recognizes the importance of practicing professionals to have the opportunities for continued professional development.

Objective. Through GHPN's alignment with the DTF, the DTF will offer up to 10 educational scholarships to attend select DTF on-line courses and/or have access to the course material at no-cost.

Application Criteria.

This scholarship is geared toward professionals without access to traditional residency training programs.

All applicants must prepare a 2-3 paragraph statement (no more than 300 words) addressing the following:

- Biographical information to include current work or academic history;
- Reason(s) for applying for the DTF educational scholarship;
- If awarded, the applicant's willingness to host a future GHPN workshop in his/her country.

GHPN SCHOLARSHIPS

Selection procedures and policies. GHPN leadership will screen all applications and submit the qualified applicants to the DTF for recommendation and final approval. Scholarship selection is based on the assessment of the applicant's statement and will be determined based on several factors to include relevant background, aptitude, training and mentorship abilities in veterinary pathology and animal health. The applicant's current location of employment and/or training will also be considered to ensure equitable distribution of scholarship opportunities in the given year. Applicants should send applications 30-60 days prior to the beginning of the course to allow for adequate review of the application. A list of upcoming and/or recurring select courses can be found under "Events" tab on the DTF website: <https://davisthompsonfoundation.org/>

Application Procedures Questions and Answers:

Q: Where and when are applications available/due?

A: Open registration; applications can be received at any time

Q: Where should applications be sent?

A: A signed PDF or word document paragraph statements are sent to [GH-PathNetwork@gmail.com](mailto:GHPathNetwork@gmail.com)

Q: What additional information/documents must accompany the application?

A: None; the signed paragraph statement is the only item required

Q: How and when will the scholarship award winners be notified?

A: Award winners will be notified via electronic correspondence sent to the email address in the paragraph statement

Q: When can the educational scholarships to attend select DTF on-line courses and/or have access to the course material be used?

A: Once awarded, the scholarship can be used at any time over a 365 day period from the date at which the scholarship is awarded.

Any additional questions regarding the DTF-GHPN educational scholarships and/or the GHPN general can be submitted to GHPathNetwork@gmail.com

MISCELLANEOUS ANNOUNCEMENTS

IHC AND ISH DATABASE

The AAVLD Pathology Committee and Cornell University have developed a searchable database of IHC and ISH assays, and which institutions perform them. Visit this link <https://app.vet.cornell.edu/ihc-ish/> to access the tool. If you would like more information about how to add assays from your institution, please contact Grant Burcham (gburcham@purdue.edu) or Melissa Macias Rioseco (mmaciasrioseco@ucdavis.edu).

| ☰ Immunohistochemistry ☰ In-Situ Hybridization 🔑 Login | | | | |
|---|--|-------------------|-----------------|---------------------|
| IMMUNOHISTOCHEMISTRY ANTIBODIES | | | | |
| Search... | | | | |
| IMMUNOHISTOCHEMISTRY ANTIBODIES | FACILITY | SUBMISSION FORM | ADDITIONAL INFO | SPECIES SPECIFICITY |
| Actin Muscle | Indiana Animal Disease Diagnostic Laboratory (Purdue University) | 📄 | \$40 | ▼ |
| Actin - Smooth Muscle | Indiana Animal Disease Diagnostic Laboratory (Purdue University) | 📄 | \$40 | ▼ |
| Adenocorticotropin Hormone (ACTH) | Cornell Animal Health Diagnostic Center | 📄 | | ▼ |
| Alpha-Antitrypsin | Cornell Animal Health Diagnostic Center | 📄 | | ▼ |
| Alpha-fetoprotein | Cornell Animal Health Diagnostic Center | 📄 | | ▼ |

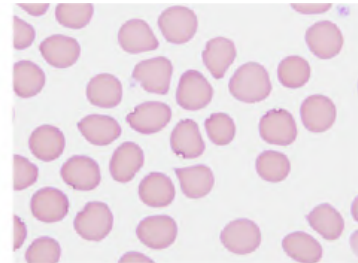


MISCELLANEOUS ANNOUNCEMENTS

Have you seen a Pathology Error published in a scientific journal?

Help us determine the extent of the problem

Submit to the **ACVP Errors in Publications Web Portal**
<https://www.acvp.org/page/ErrorsinPublication>



Click here to listen to past episodes of the podcast



Check out our archive!

Click here



MISCELLANEOUS ANNOUNCEMENTS



Davis-Thompson Foundation



Davis-Thompson Foundation
Surgical Pathology of Tumors
of Domestic Animals

**Tumors of the
Gastrointestinal
Tract**

Editor: J.S. Munday
J.S. Munday, B.L. Plattner,
J.M. Hostetter, D. Bienzle, C.G.
Knight, F.A. Uzal, A.R. Bertos



Surgical Pathology of Tumors
of Domestic Animals

Edited by M. Kiupel

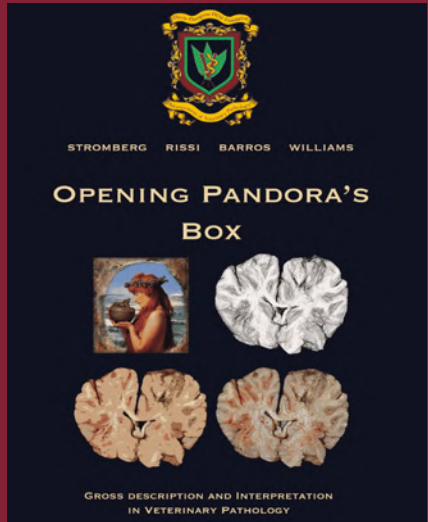
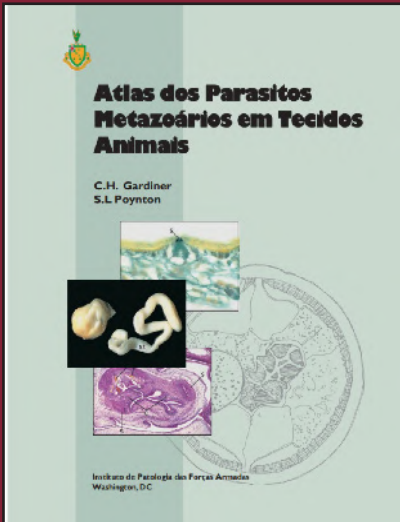
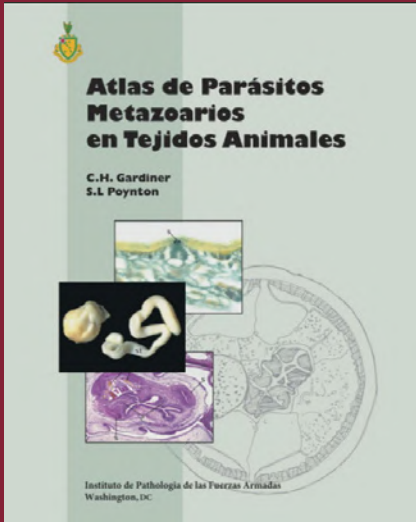
Davis-Thompson DVM Foundation
Advancement of Veterinary Pathology

Volume 1: Epithelial Tumors of the S

**CHECK OUT OUR STORE
FOR BOOKS AND MERCH**

CLICK HERE 

MISCELLANEOUS ANNOUNCEMENTS



to Get a Digital Download of our e-books!

RETIRING?

Have slides left over from your recent slide seminar? Just looking to free up some storage space? The Foundation is looking for additional glass slides, kodachromes and other similar materials for its Correspondence Division and Study Centers. All materials should be well identified with as much accompany history and discussion as possible, as these materials are expressly used for teaching. Moreover, as the Foundation is a publicly donative charity, all donated materials are tax-deductible. For more information, please contact Dr. Bruce Williams at bruce.h.williams.dvm@gmail.com.

Davis-Thompson Foundation Pathology Externship

Since 1980, the Davis-Thompson Foundation lab sites have hosted more than 125 veterinary students at 8 participating diagnostic laboratories. These students usually have a strong interest in pathology itself or zoo or poultry medicine that require a strong pathology background. The Foundation is always interested in having veterinary students apply for an externship and we would like to add more externship sites that do not usually have veterinary students, to help increase their interest and knowledge of pathology with some off-campus experience. For more information, contact Dr. Jim Britt, jobritt@sbcglobal.net; 501-912-1449.



Davis-Thompson Foundation

DAVIS-THOMPSON FOUNDATION

Phone: 847-367-4359

Fax: 847-247-1869

davis-thompson-foundation.org

cldavisdvm@comcast.net

MAY 2026